

<https://www.nisshineng.co.jp>

Nisshin Engineering Inc.

Sumisei Nihonbashi Koami-cho Building, 5F,
14-1, Koami-cho, Nihonbashi, Chuo-ku, Tokyo, Japan 103-8544
Tel +81-3-3660-3425(General inquiries) Fax +81-3-3660-3845

Nisshin Engineering Inc.

“Powder Technology & Project Engineering” Creates a new world.

Powder is the starting point of manufacturing. Humans have achieved a variety of manufacturing processes by pulverizing various kinds of materials, and controlling the shape and size of particles. Powder technology continues to play an important role in a wide range of fields, including foods, chemicals, medicine, metals, and electronics.

With our world-class powder technology originating from milling technology, and project engineering, which places importance on the connection with humans, we have been able to connect these dreams to help us face the challenges of the future.

We have, and will continue to open up new horizons in manufacturing through our “powder technology” and “project engineering”.

Technical Capabilities and Human Ability Expand the Possibilities of Manufacturing

Our customers range from those new to plant construction and equipment installation, to those experienced in manufacturing, and face a variety of problems and issues which need to be solved. Technical capabilities are necessary for project execution. It is human ability that makes the most of these capabilities, and it is for this very reason that we value communication with our customers, and strive to be engineers who work together as partners to achieve our common goals.

Group of engineers with excellent consulting skills

All of our project members are engineers. Professionals in various fields, such as machinery, electrical, and construction, are in charge of all aspects of projects from design to equipment procurement, construction work, commissioning, operation, and maintenance, and provide comprehensive support for our customers' initiatives.

Proposal capabilities from the manufacturer's perspective developed by Nisshin Seifun Group

Having food manufacturers in our Group, we are familiar with the key points of plant and equipment management from the manufacturer's perspective. We draw up optimum proposals from the planning stage by leveraging our superiority such as working on joint demonstration projects together with laboratories within the Group.

Supporting a wide range of industries centered on powder technology

With powder technology as our core technology, Nisshin Engineering conducts business in a wide range of fields, including food, chemicals, medicine, metals, and electronics. We are involved in many projects outside the Nisshin Seifun Group, and provide engineering services to various industries.

Three businesses based on P&P to take manufacturing to a new stage

Powder Technology

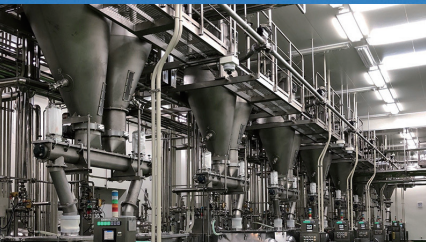
Nisshin Engineering has been continuously refining and improving its powder technology since our establishment over 50 years ago. We support our customers' initiatives by utilizing world-class powder technologies such as the submicron classification of metals, nanoparticle processing to create new materials, and powder handling technology cultivated in plant construction.

Project Engineering

Nisshin Engineering has an extensive experience spanning more than 3,000 projects. We provide engineering services for a variety of projects, large and small, from equipment installation to plant construction. Project members provide support from consulting at the planning stage to after-sales support.

Plant Engineering

Customers have unique factories and plants with unrivalled capabilities. We strive earnestly to build factories and install production lines to meet the requirements of our customers. We provide the best solutions by identifying problems, verifying technical issues, and taking factors such as cost and quality into account.



Machinery & Equipment

Nisshin Engineering manufactures and sells powder equipment for the production of advanced materials such as the world's first submicron classifier, pulverizers, and feeders. We provide meticulous support from actual equipment testing to installation and maintenance.



Powder Processing Service

Customers requiring powder technology and equipment for processes such as pulverizing, classification, nanoparticle processing, and measurement contract us to carry out work on their behalf. We are able to cater to a wide range of customer requests from low-volume sample production to mass production.



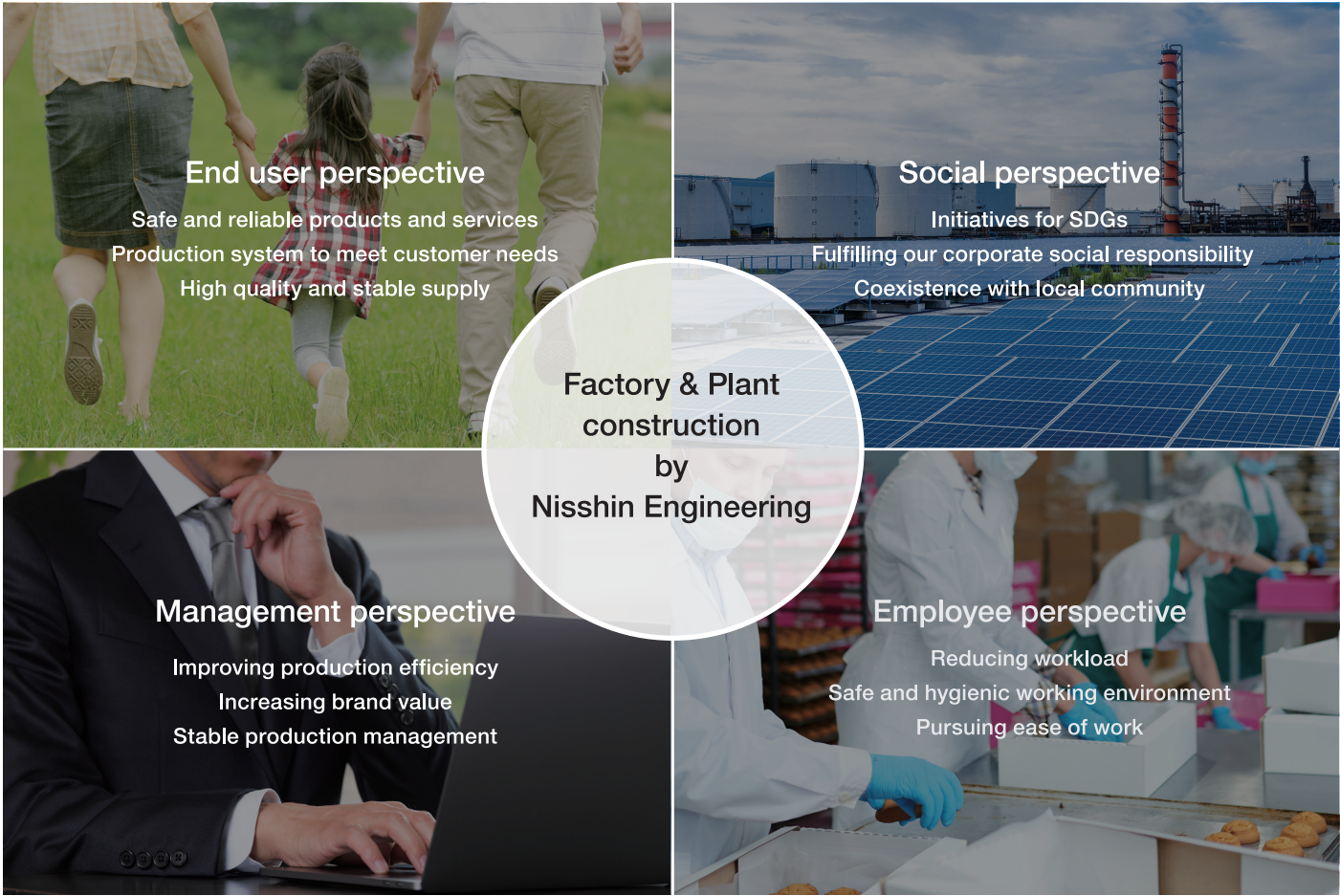
Plant Engineering

Optimal plant construction and production equipment proposals from viewpoint of customer operating plant

Customers have diverse factory and plant construction demands, including improved productivity, stable supply, quality, environmental consideration, and ease of work.

These will only be effective if they are continuously maintained after completion.

At Nisshin Engineering, we are always looking to maximize operational effectiveness, and promote projects from multiple perspectives.

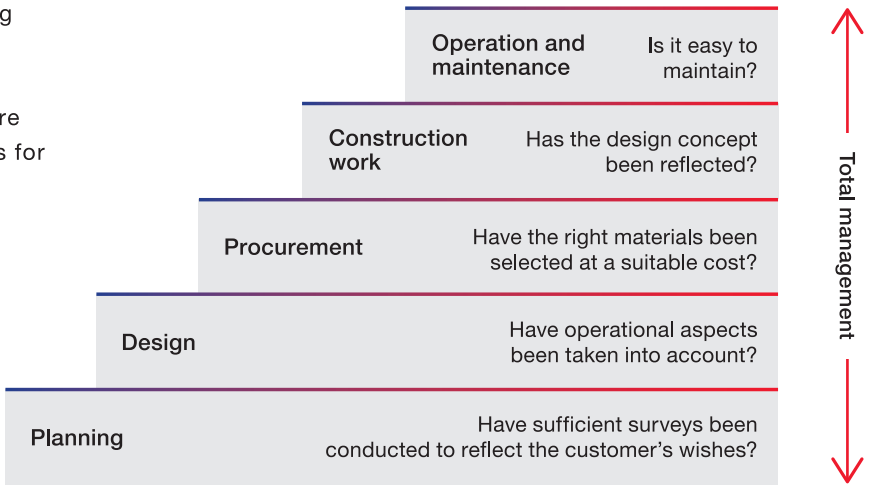


Total engineering for integrating construction process and operation

Nisshin Engineering places emphasis on total management from planning to design, construction, operation, and maintenance. By not separating buildings, equipment, and operations, and by reflecting a consistent design philosophy in construction and production equipment, we are able to realize the optimal factories and plants for all involved.

Main activities

- Planning, design, design supervision, construction management
- New factory construction and plant installation
- Renovation and extension work for buildings and building equipment
- Relocation, expansion, and removal of production equipment



Experience of more than 3,000 projects in wide range of fields

Nisshin Engineering leverages its extensive experience to drive successful projects while meeting the challenges faced by different customers.

Industries and product materials

Powdered food	Other foods	Silos and transport equipment	Cosmetics, chemicals, and pharmaceuticals	Electronics and batteries	Systems and distribution centers
Processed flour products	Cooked rice and prepared food	Grain silos	Cosmetics	Electronic materials	Production management systems
Processed rice and grain products	Meat, fish, and vegetable processing	Biomass silos	Toiletries	Battery materials	Traceability
Mixes	Frozen food	Unloader equipment	Chemicals	Semiconductor materials	Robot equipment
Food additives and flavor enhancers	Instant food	Large-scale weighing and transport equipment	Glass and ceramics	Functional materials	Distribution centers
Functional food	Beverages and dairy products	Careful selection and sorting equipment	API and pharmaceutical formulations	Metallic materials	Automated warehouses
Healthcare food	Confectionery and desserts	Bulk shipping equipment	Yeast and enzymes	Minerals	Warehouse management systems

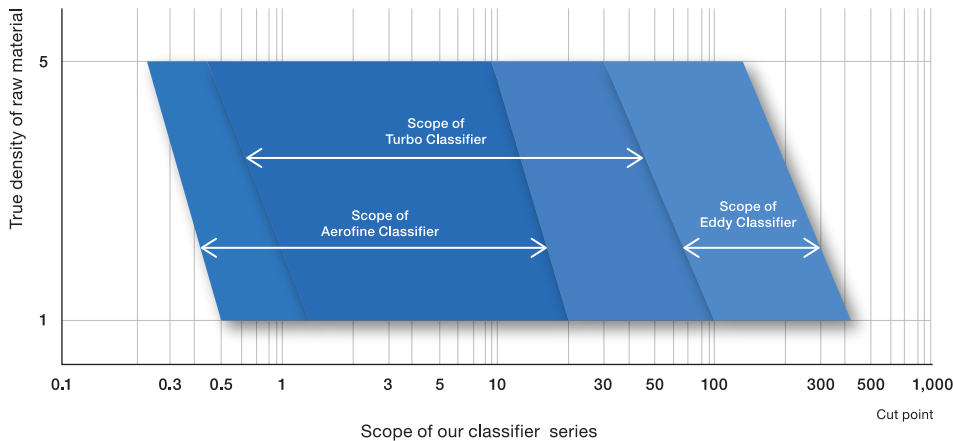
Machinery & Equipment

Providing the world’s best powder equipment and technology

From the world’s first classifier capable of submicron classification, to pulverizers, feeders, mixers, and bulk handling equipment such as IBC systems and mixers, Nisshin Engineering leverages its extensive know-how of the characteristics of various powders to propose equipment suitable for the powders handled by our customers.

Extensive fine particle control technologies from nano to micron level

Nisshin Engineering’s strength lies in “high-precision classification” in a wide range of fields from the nano to micron level. In recent years, as electronic devices and components have become more compact and highly functional, the need for high-precision classification from the submicron to single micron level has been increasing. Our classifiers and fine particle control technologies are being used by many customers.



Our Classifier



Aerofine Classifier (AC)

This swirling airflow-driven air classifier is particularly good for classifying fine powder with low specific gravity.



Turbo Classifier (TC)

This forced vortex type precision air classifier is the world's first to realize submicron level classification.

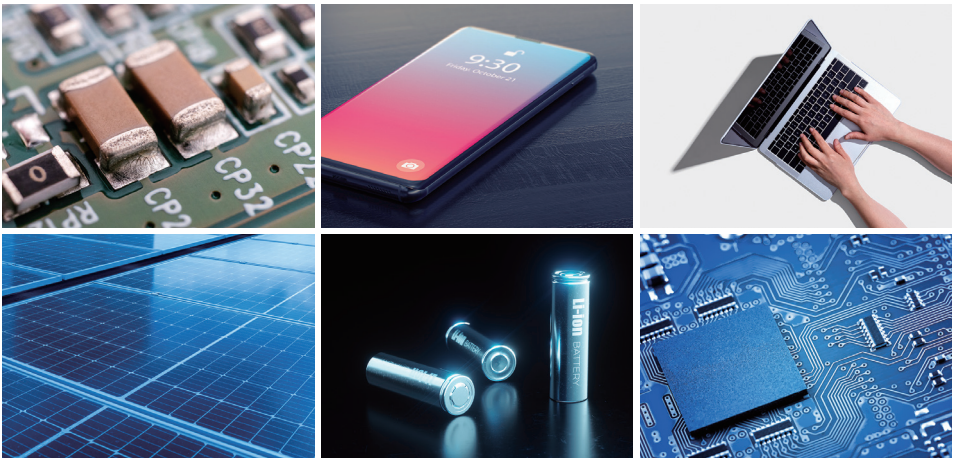


Eddy Classifier (EC)

This semi-free vortex type air classifier employs a simple mechanism with no drive unit.

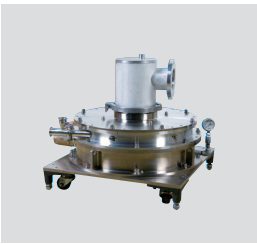
Adjusting the grain size of various materials

Nisshin Engineering’s powder equipment is capable of handling a wide variety of powder materials. These materials are used in a wide range of fields, including electronic materials such as laminated ceramic capacitors and printed circuit boards, materials for secondary batteries and solar cells, semiconductors, ferromagnetic materials, and optical materials.



Pulverizers

Nisshin Engineering produces airflow-driven and mechanically-driven pulverizers. These machines are capable of pulverizing at the several microns to tens of microns level, allowing a sharp particle size distribution to be obtained.



Feeders

These feed devices are capable of delivering constant quantities of difficult-to-handle fine powder. Constant feeding is also possible under pressurized/reduced pressure, and special atmospheric conditions.



Classifiers

Nisshin Engineering offers a lineup of three types of classifiers, which are capable of submicron to several hundred micron level classification. In particular, our classification performance at the submicron level is world class.



IBC systems and mixers

Nisshin Engineering also offers a lineup of bulk handling equipment such as IBC systems and mixers. Intermediate Bulk Containers manufactured by Matcon Ltd. in UK are equipped with a powerful discharge function, helping to realize high-mix low-volume production with a parallel batch system.



Option

Equipment customization based on use, post-delivery maintenance

Customization

Equipment can even be customized to meet customer needs, such as “reducing adhesion”, “reducing wear”, and “preventing powder oxidation”.

Maintenance

Nisshin Engineering also provides maintenance services for equipment and devices delivered to customers in order to avoid sudden stoppages, maintain operating efficiency, and ensure safety.

Powder Processing Service

Outsourcing service capable of world’s most advanced fine particle powder processing

Nisshin Engineering offers powder processing services capable of accurately meeting requirements for the development of new materials, contract manufacturing, and measurement analysis by focusing on pulverization, classification, and nanoparticles.

These services have been finely tuned based on thorough quality control, and address a wide range of needs from the processing of several tens of grams to large-volume processing of tens of tons of material.

1 Wide range of specialized powder equipment

Nisshin Engineering caters to a wide range of powder processing needs with “pulverizing” capable of handling material in the submicron to hundreds of microns level, “classification” capable of handling a wide range of sizes through sieving and air classification, and “nanoparticle processing” capable of producing nanoparticles with excellent dispersibility and uniform particle size.

2 Quality management for ISO 9001 certified plants

Each manufacturing room is independent, and all processes are completed in the same room to prevent cross-contamination. Moreover, we conduct quality inspections in a manner that meets customer needs.

3 Contracting system that offers flexibility like inhouse production

Nisshin Engineering is able to flexibly cater to requests for confirmation of processing progress and for product packaging. Customers can also check detailed processing results at the time of delivery.

4 Sales and production management handled by same people for speedy response

Sales and production management are handled by the same people, allowing Nisshin Engineering to coordinate test schedules and submit estimates as quickly as possible.

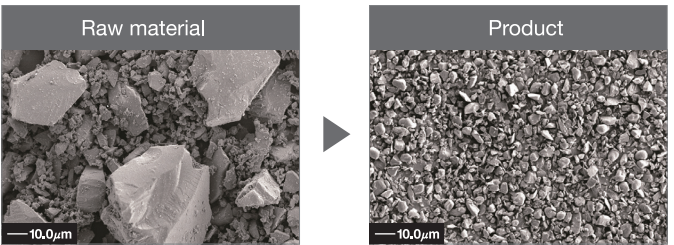
Meticulously catering to diverse powder processing needs

Nisshin Engineering provides a variety of processing services that we undertake on behalf of customers, such as those who want to produce powder such as ultrafine particles, but lack the technology and equipment to do so. We have established a system to meet a wide range of needs, from sample manufacturing to mass production.

Pulverizing

Nisshin Engineering is capable of pulverizing material from several microns to several hundred microns in size for a wide range of applications, including electronic materials, metals, ceramics, and chemical products.

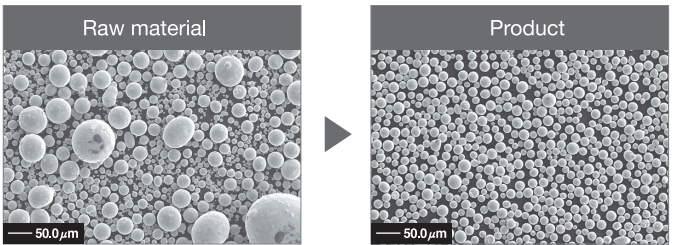
Glass powder pulverization



Classification

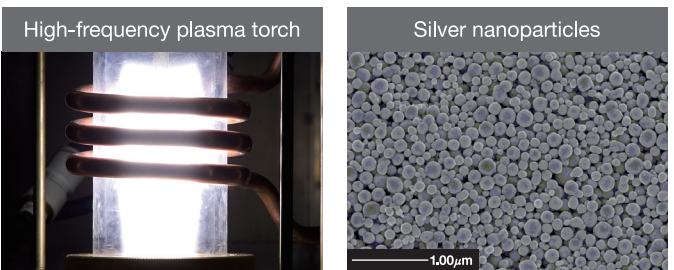
Air classification is possible at the several hundred microns to submicron level, and our classification accuracy is highly rated by our customers.

Solder powder classification



Nanoparticle processing

Nisshin Engineering's nanoparticle processing service supports the production of various inorganic nanoparticles. We can also handle “composite nanoparticles” by feeding multiple raw materials simultaneously, and the “spheroidizing” of base powder.



Measurement

Nisshin Engineering's technical staff, who are also at the forefront of powder measurement technology, combine data with expert commentary.



Option

We can also handle bulk consignments.

Nisshin Engineering also handles large-volume contract manufacturing by combining various equipm.

Scaling up low-volume trial production

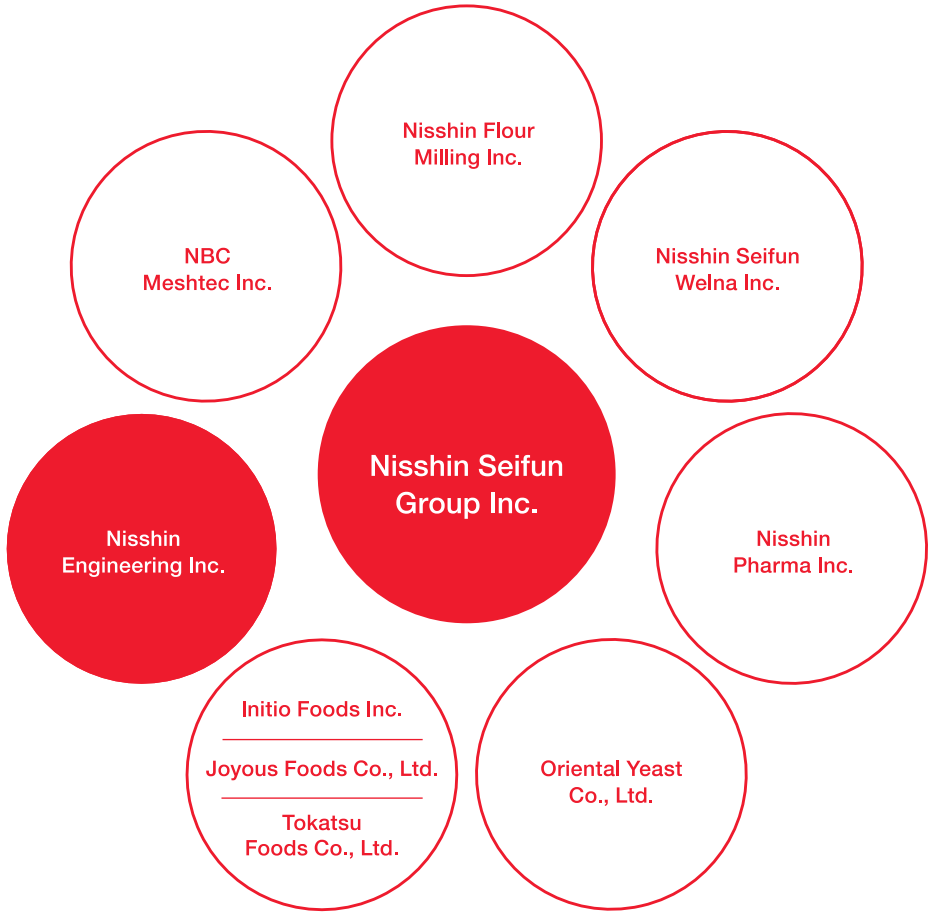
Mass production with advanced processing technology

Capable of meeting growth requirements

As a member of Nisshin Seifun Group Contributing to a Healthy and Fruitful Life for All

Maximizing the Group’s collective strength by strengthening cooperation among companies

The Nisshin Seifun Group has built a unique value chain and developed a variety of businesses by leveraging the working capital it has accumulated as Japan’s leading milling company supporting “food infrastructure”. Each of our Group companies, who are in charge of daily industries for living such as flour milling, processed food, yeast and biotechnology, healthcare foods, prepared dishes and other prepared foods, engineering, and mesh cloth, is expanding globally by strengthening cooperation and maximizing the Group’s collective strength.



Initiatives for realizing a sustainable society

In response to the social changes we face on a daily basis, the Nisshin Seifun Group strives to achieve both a sustainable society and corporate growth by contributing to the resolution of social issues through its business activities.

CSR priorities

Provide safe and healthy food and responsible consumer communication



Enable secure and sustainable raw material procurement



Efficiently handle product and packaging waste



Address climate change and water resource issues



Provide working environments that are healthy and fulfilling



Environmental Basic Policy

Our Philosophy

Global environmental protection is an important issue for the whole of society toward human existence and prosperity, and the most critical management issue for companies doing business as a member of society. Under a corporate principle of “contributing to a healthy and fruitful life for all” which is founded on the guiding philosophies of “the basis of business is built on trust” and to be “in tune with the changing climate”, Nisshin Seifun Group conducts our free and active business with deep understanding as a member of the global community for environmental protection.

Philosophy Guideline (Summary)

1. Taking life cycle into account to reduce environmental impact at all stages of the manufacturing process
2. Complying with environment-related legislation and Corporate Code of Conduct
3. Consideration of all business activities to realize a sustainable society
4. Reducing environmental impact, and preventing air, water, and soil pollution
5. Providing information and education on environmental conservation
6. Providing stakeholders with environmental information, disclosing information on environmental issues, and minimizing environmental impact
7. Understanding environmental issues, needs, and expectations through communication with local communities
8. Continuously improving environmental conservation activities together with stakeholders

Company Overview

Nisshin Engineering opens up new horizons in manufacturing with P&P

Nisshin Engineering was established in 1972 as an independent company from the technical division of Nisshin Flour Milling Inc. (now Nisshin Seifun Group Inc.). Since then, we have expanded our business across the three core business areas of (1) Plant Engineering, which uses powder technology as its core technology, (2) Machinery & Equipment such as pulverizers and classifiers, and (3) Powder Processing Service using our characteristic powder equipment. We will continue to open up new horizons in manufacturing with the world’s best “powder technology”, and with “project engineering”, which places importance on the connection with humans.

Corporate Name	Nisshin Engineering Inc.
Established	April 28, 1972
President	Hiroshi Murata
Capitalization	107,500,000 yen
Stockholders	Nisshin Seifun Group, Inc. (Holds all outstanding shares)
Registration Items	ISO9001(Powder Processing Service): Powder Business Department Approval No. JSAQ928 ISO14001 Approval No. JUSE-EG-382 Construction Work License Tokyo Metropolitan Governor Approval (Special-1) No.112034 Architectural and construction business ,Machinery, equipment, and facility business, Electrical contracting business, Plumbing business, Civil engineering business, Carpentry business, Plastering business, Scaffolding and excavation business, Masonry business, Roofing business, Tiling, roofing and block business, Steel structure contracting business, Steel reinforcement business, Paving business, Sheet metal business, Glazing business, Painting business, Waterproofing business, Interior finishing business, Heat insulation business, Cabinetmaking business, demolition business First-class Architect’s Office License Tokyo Metropolitan Governor Approval No.13999

Address

Headquarters Office
Sumisei Nihonbashi Koami-cho Building, 5F, 14-1, Koami-cho, Nihonbashi, Chuo-ku, Tokyo, Japan 103-8544
Tel +81-3-3660-3425 (General inquiries) Fax +81-3-3660-3845

Department	
Plant Engineering Department 1	Plant Engineering Department 2
Construction Support Department	Mechatronics Department
Sales Department	General Affairs Department
Management Planning Department	Purchasing Department

Powder Business Department
5-3-77 Tsurugaoka, Fujimino City, Saitama, Japan 356-0045
Tel +81-49-264-3049 (General inquiries) Fax +81-49-264-9367

Department	
Machinery Sales Center	Powder Processing Center
Technical Development Group	General Affairs Group

Sales Department Osaka Sales Office
Shin-Osaka Trust Tower 8F, 3-5-36 Miyahara, Yodogawa-ku, Osaka, Japan 532-0003
Tel +81-6-6350-6011 Fax +81-6-6350-6025

(As of April 1, 2022)